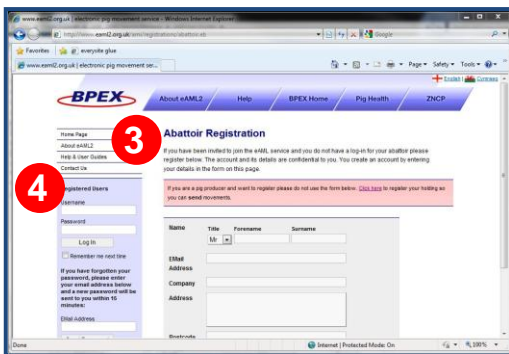


REGISTERING FOR eAML2 ACCESS

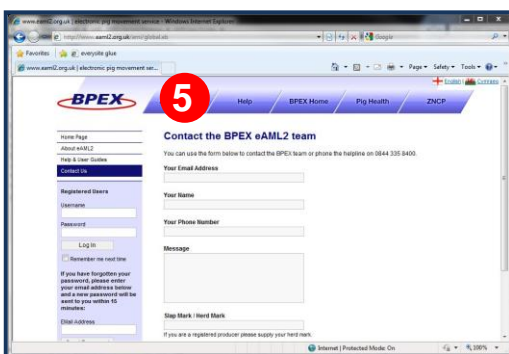
If you are already registered for the BPEX Online FCI service you don't need to register again but can use the same username and password.



- Go to <http://www.eaml2.org.uk>
- On the home page click on the 'Abattoir Registration' link at the bottom of the left hand panel to go to the registration screen



- Complete the requested contact details and submit the form.
- Your username and password will then be emailed shortly to you.
- Once you have received your log in details you can log in and use the eAML2 service.



- To update or change your contact details you can use the 'Contact form' in the 'Help' tab or call us.

Need help?

Contact us on the eAML2 Helpline
Tel: 0844 335 8400* Fax 0247 669 2405
 Email: eaml2@bpex.org.uk

*Mon-Fri 9am – 5pm
 Calls are charged 5p per minute from standard BT phone lines

USING THE eAML2 SERVICE

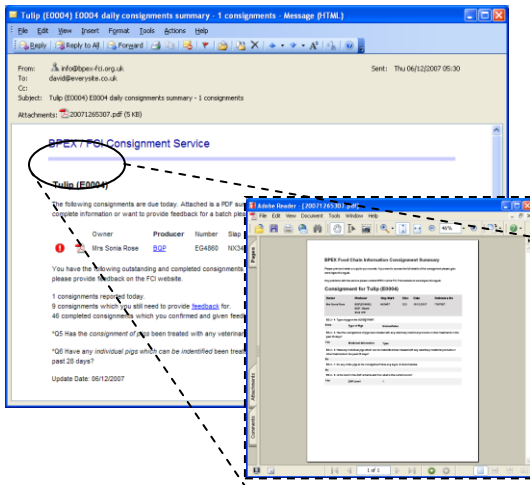
1. Your daily movement emails

Once registered on the e-AML2 system you will receive daily emails with movement license and FCI information attached to the email in form of a pdf file.

You will also have an overview of what is coming in that day. (If you have any problem opening the pdf files please visit <http://get.adobe.com/uk/reader/>)

Updated emails are sent to you once a producer has confirmed the actual number of pigs loaded.

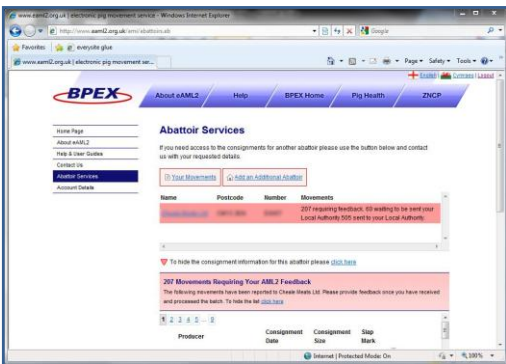
Tip: If a consignment has any abnormalities or medications administered they will be marked by an exclamation mark.



2. Your online eAML2 account

In addition to the daily emails you can access all of your movements and view copies of full FCI reports at any time on your online account on **www.eaml2.org.uk**

Tip: If for any reason you do not receive an email in the morning you can still log on to the website to check your movement list for the day.

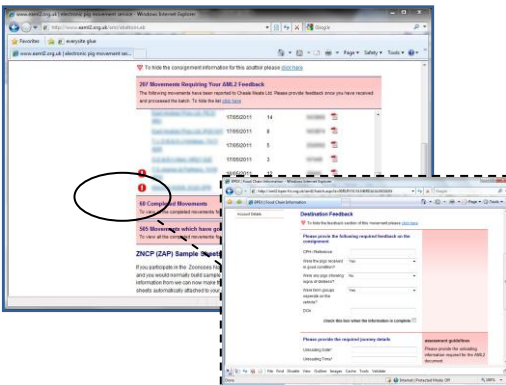


3. Providing eAML2 feedback – Important!

Once you have received a consignment you must provide 'Section D' feedback to the eAML2 service i.e. confirm numbers received, dead on arrivals etc.

You can do that in your account on the website under 'abattoir services', where you will see a list or by clicking on the 'AML2 Feedback' link in your daily email.

Once you have submitted the feedback that is it! You don't need to send anything to your Trading Standards – the information is automatically sent to them and the Government database.



4. No paperwork

The e-AML2 website will keep a complete archive of all of your consignments securely for you for the legally required time. There is no need to print or file any paper licenses or take copies from the hauliers/drivers.

You can access your movement archive at any time and review all consignment information and print complete pdf reports of each consignment if necessary.

